

MANU-BAC®



CLASSIC



MANUTENTION - SYSTÈMES
DE TRANSPORT ET DE STOCKAGE



C-543920 - 36 Lit.
 ext. 545 x 390 x 200 mm
 int. 515 x 360 x 185 mm
 poids 2,15 kg

C-752 - 25 Lit.
 ext. 620 x 500 x 150 mm
 int. 530 x 425 x 140 mm
 poids 1,10 kg



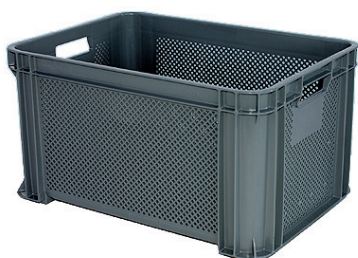
C-543920-A - 36 Lit.
 ext. 545 x 390 x 200 mm
 int. 515 x 360 x 185 mm
 poids 2,00 kg

C-614 - 75 Lit.
 ext. 620 x 500 x 360 mm
 int. 530 x 425 x 345 mm
 poids 2,45 kg



C-543929 - 52 Lit.
 ext. 545 x 390 x 295 mm
 int. 515 x 360 x 280 mm
 poids 2,90 kg

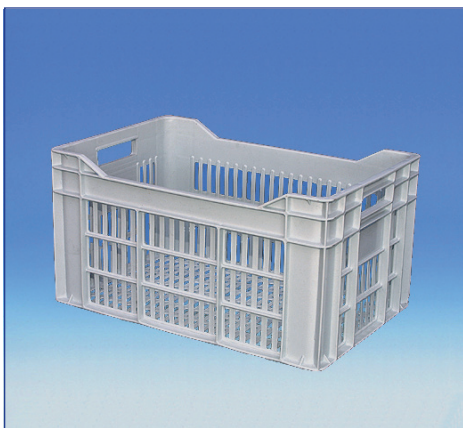
C-11145 - 145 Lit.
 ext. 800 x 600 x 440 mm
 int. 642 x 442 x 402 mm
 poids 5,02 kg



C-543929-A - 52 Lit.
 ext. 545 x 390 x 295 mm
 int. 515 x 360 x 280 mm
 poids 2,70 kg



voir folder spécial
DOLLY & ROLLERS



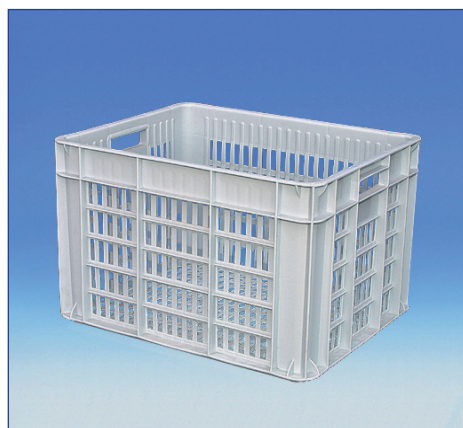
C-1047 - 50 Lit.
 ext. 540 x 360 x 290 mm
 int. 510 x 335 x 270 mm
 poids 2,00 kg



C-925 - 12 Lit.
 ext. 400 x 350 x 105 mm
 int. 370 x 320 x 95 mm
 poids 0,60 kg



C-1047-A - 50 Lit.
 ext. 540 x 360 x 290 mm
 int. 510 x 335 x 270 mm
 poids 2,50 kg



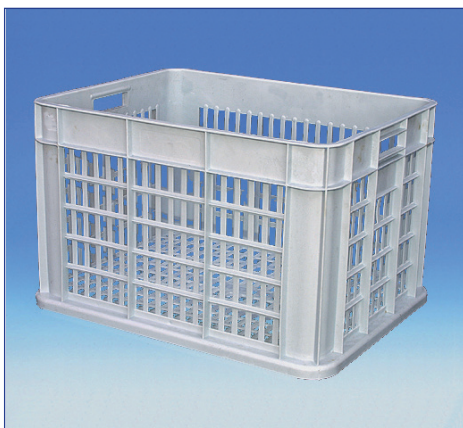
C-664 - 50 Lit.
 ext. 500 x 400 x 320 mm
 int. 465 x 365 x 290 mm
 poids 2,10 kg



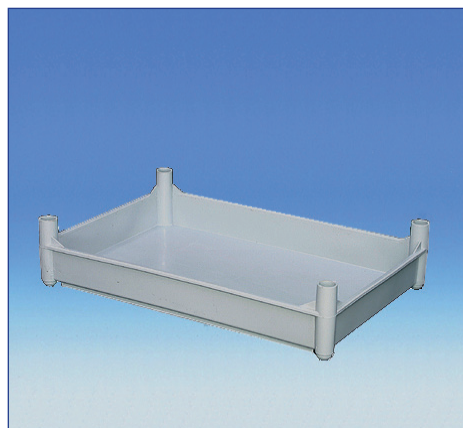
C-753 - 30 Lit.
 ext. 590 x 460 x 158 mm
 int. 555 x 425 x 130 mm
 poids 1,77 kg



C-941 - 18 Lit.
 ext. 400 x 350 x 160 mm
 int. 370 x 320 x 145 mm
 poids 0,75 kg



C-669 - 85 Lit.
 ext. 590 x 460 x 375 mm
 int. 555 x 425 x 345 mm
 poids 2,50 kg



C-050 - 12 Lit.
 ext. 540 x 360 x 115 mm
 int. 520 x 340 x 100 mm
 poids 0,75 kg